



00105 Fine Linen

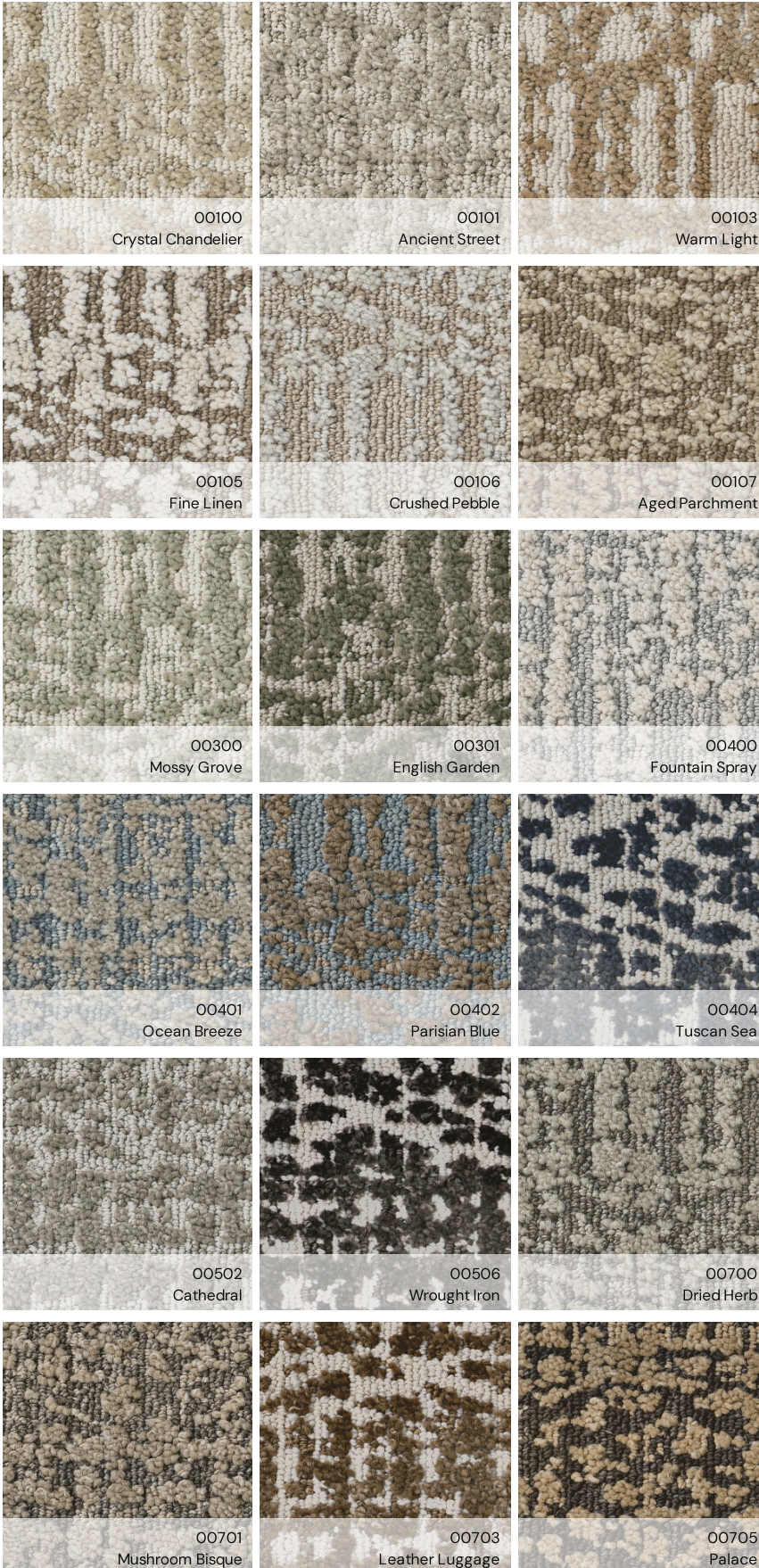
**Anderson
Tuftex®**

Batique

Batique features intricate and elaborate patterning akin to a tapestry. Adorn your space with a creative fusion of texture, striated color, and hand-loomed appeal. Batique features ANSO® High Performance fibers with built in stain protection that are fade and bleach resistant. This product design features intentional shifts in color and striations giving each style a handcrafted look. The perfectly imperfect shifts in color are designed for you, with the exceptional durability for your pet.

Batique

Anderson Tuftex®



Specifications

Style Number	ZZ304
Construction	Pattern Cut/ Loop
Fiber Content	100% Anso® High Performance PET
Weight	46.8 Oz/Yd ² 1586.8 G/M ²
Total Recycled Content	56.66% (Pre-Consumer 0% Post-Consumer 56.66%)
Pile Thickness	0.43 In 10.92 Mm
Colors	18
Backing	Softbac
Width	12 Ft
Pattern Repeat	18 In W X 27.5 In L 45.72 Cm W X 69.85 Cm L
Dye Method	Predyed
Par Rating	3.75
Pill Test	Pass
Installation	Side Seam Only (View Guide)
Sustainability	CRI® Green Label Plus (GLP9970) Environmental Product Declaration (EPD)
Country Of Origin	USA
Warranties	Pet Perfect 20 Year Limited Residential Broadloom Carpet Warranty

Intentionally Crafted

This carpet is designed to feature random striations and intentional color shifts. These subtle nuances and dramatic flourishes will vary across the product and may not be fully captured in room scene images.

Product image for illustration purposes only; Actual product will vary.

ANDERSONTUFTEX.COM

For reference purposes only if printed or downloaded.